



SA464AM1

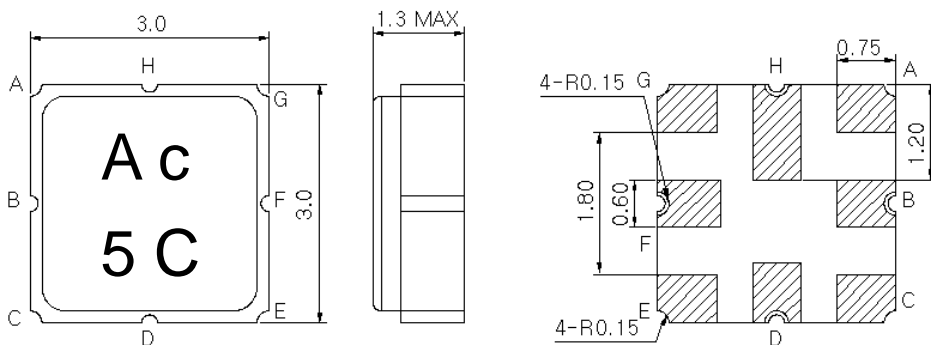
CDMA450(B-Band),
Balanced RF- Rx SAW Filter

PRELIMINARY PRODUCT INFORMATION (Revision 12/2005)

Parameters Description	Unit	Minimum	Typical	Maximum
Center Frequency (Fo)	MHz	-	464.0	-
Maximum Insertion Loss in 461.5 ~466.5 MHz	dB		2.2	4.5
Source Impedance (single ended) ⁽¹⁾	Ω		50	
Load Impedance (balanced ended) ⁽¹⁾	Ω	-	100	-
Operating Temperature Range	$^{\circ}\text{C}$	-30	-	+80
VSWR in 461.5 ~ 466.5 MHz	-	-	1.9	2.4
Stop Band Attenuation:				
0.3 ~ 451.5 MHz	dB	40	55	-
451.5 ~ 456.5 MHz	dB	35	50	-
485.0 ~ 507.5 MHz	dB	40	50	-
507.5 ~ 1200.0 MHz	dB	40	55	-
1200.0 ~ 2000.0 MHz	dB	35	50	-
Maximum Input Power	dBm	-	-	27
Package type & size		M1		
Length x Width	mm ²	-	3.0 x 3.0	-
Height	mm	-	-	1.3

Notes : (1) No Matching Network .

PACKAGE DRAWING



Marking Descriptions :

A : CDMA450 Application, c : Series Number
 5 : Date Code(Year), C : Date Code(Month)

PIN Descriptions :

IN – B, OUT – E,G,
 GROUND – A,C,D,F,H

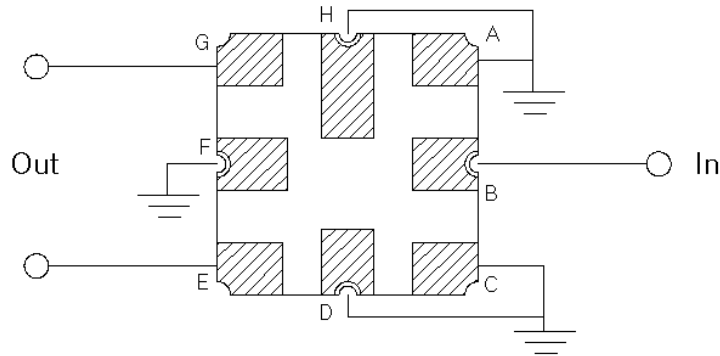
SAWNICS, Inc

344 Mangwol-Ri Jungnam-Myon Hwasung Kyunggi 445-964 / Korea.
 Tel: +82 31 354 9801 / Fax: +82 31 354 9805 / www.sawnics.com / sales@sawnics.com

SA464AM1

CDMA450(B-Band),
Balanced RF- Rx SAW Filter

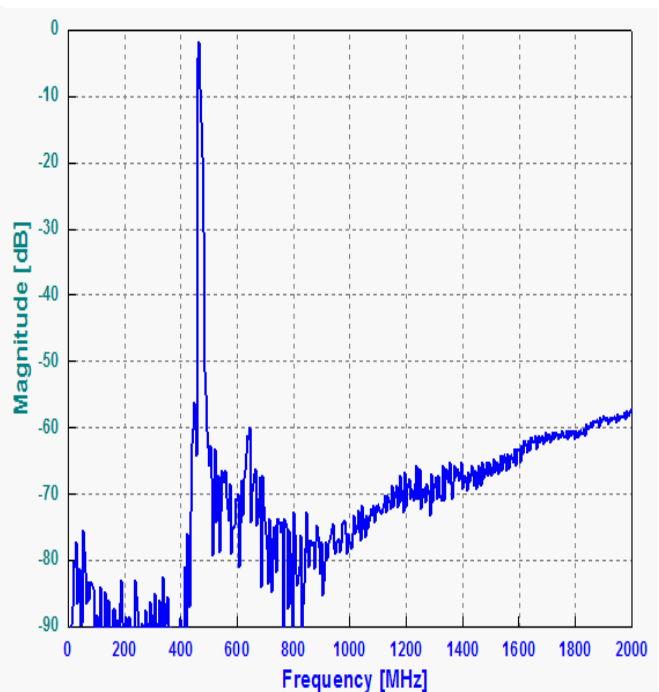
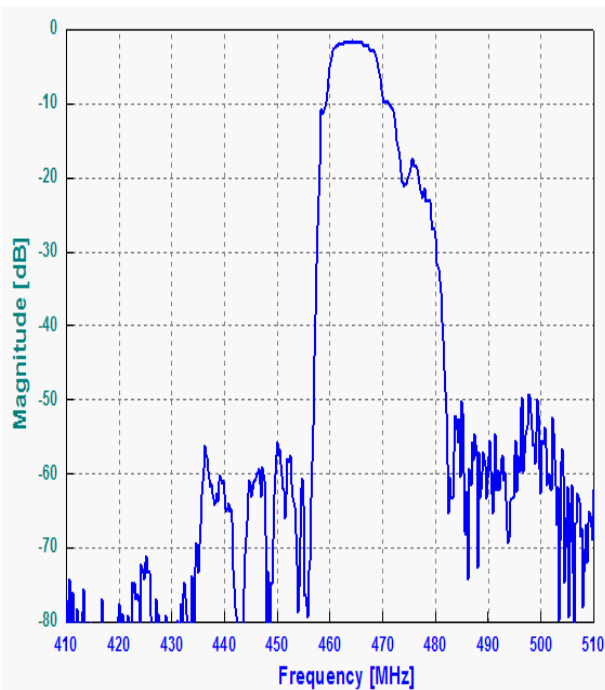
TESTING ENVIRONMENT



Source Impedance : 50 Ω

Load Impedance : 100 Ω

FREQUENCY RESPONSE



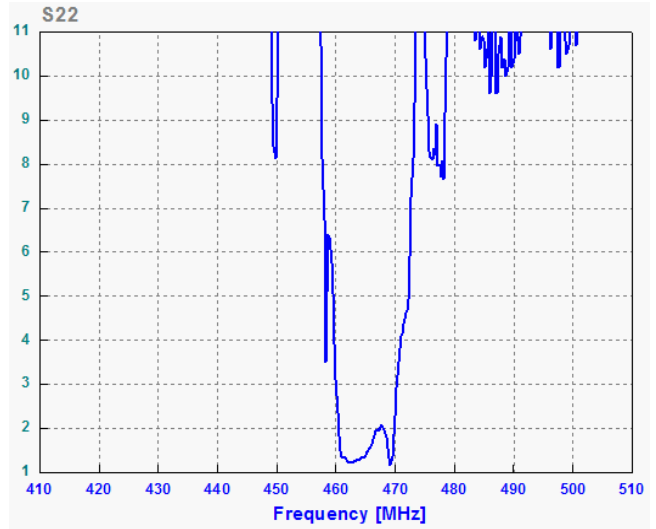
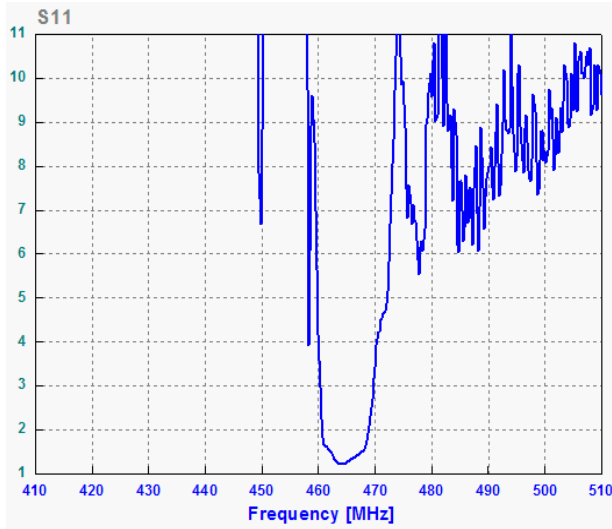
SAWNICS, Inc

344 Mangwol-Ri Jungnam-Myon Hwasung Kyunggi 445-964 / Korea.
Tel: +82 31 354 9801 / Fax: +82 31 354 9805 / www.sawnics.com / sales@sawnics.com

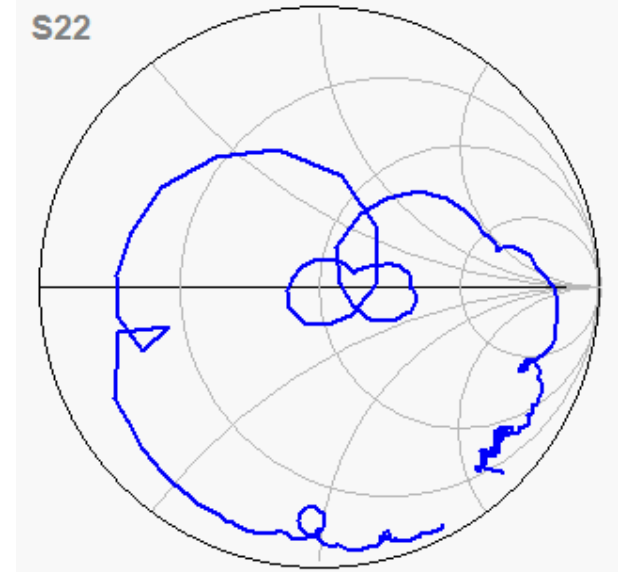
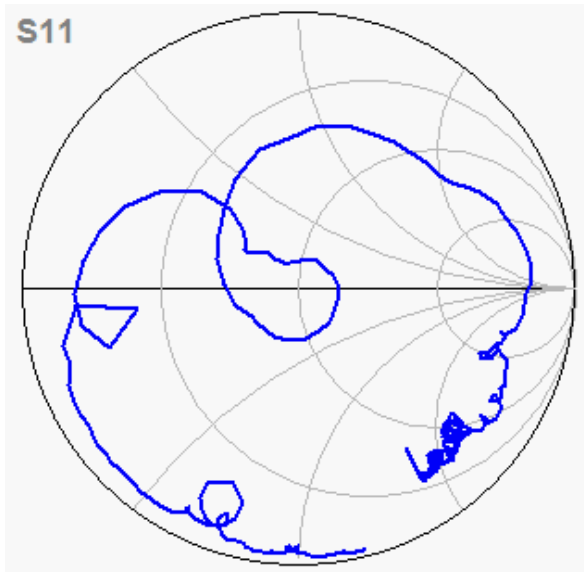
SA464AM1

CDMA450(B-Band),
Balanced RF- Rx SAW Filter

VSWR



SMITH CHART



SAWNICS, Inc